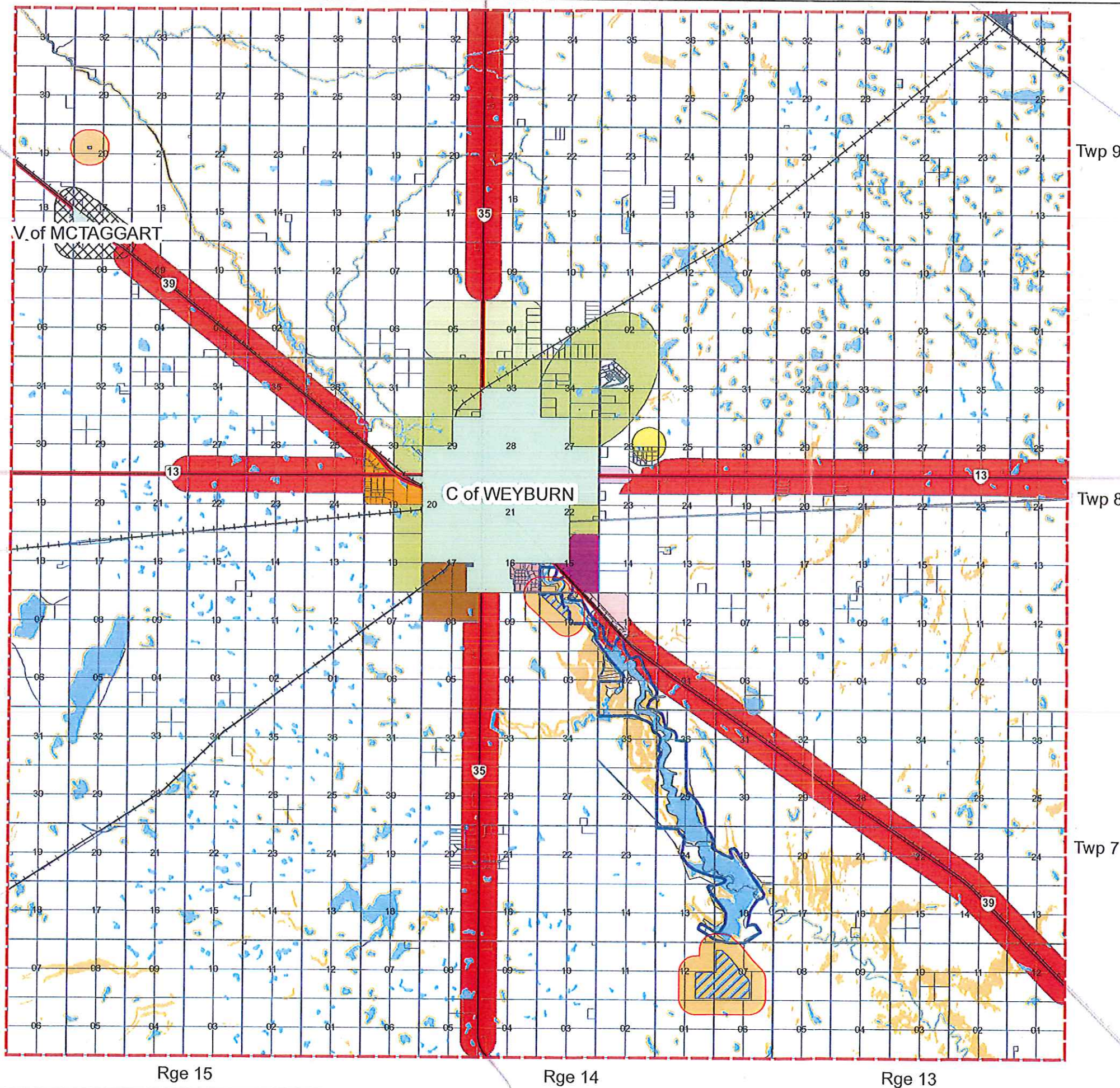


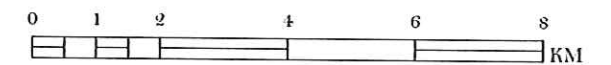
Rural Municipality of Weyburn No. 67

Future Land Use Map



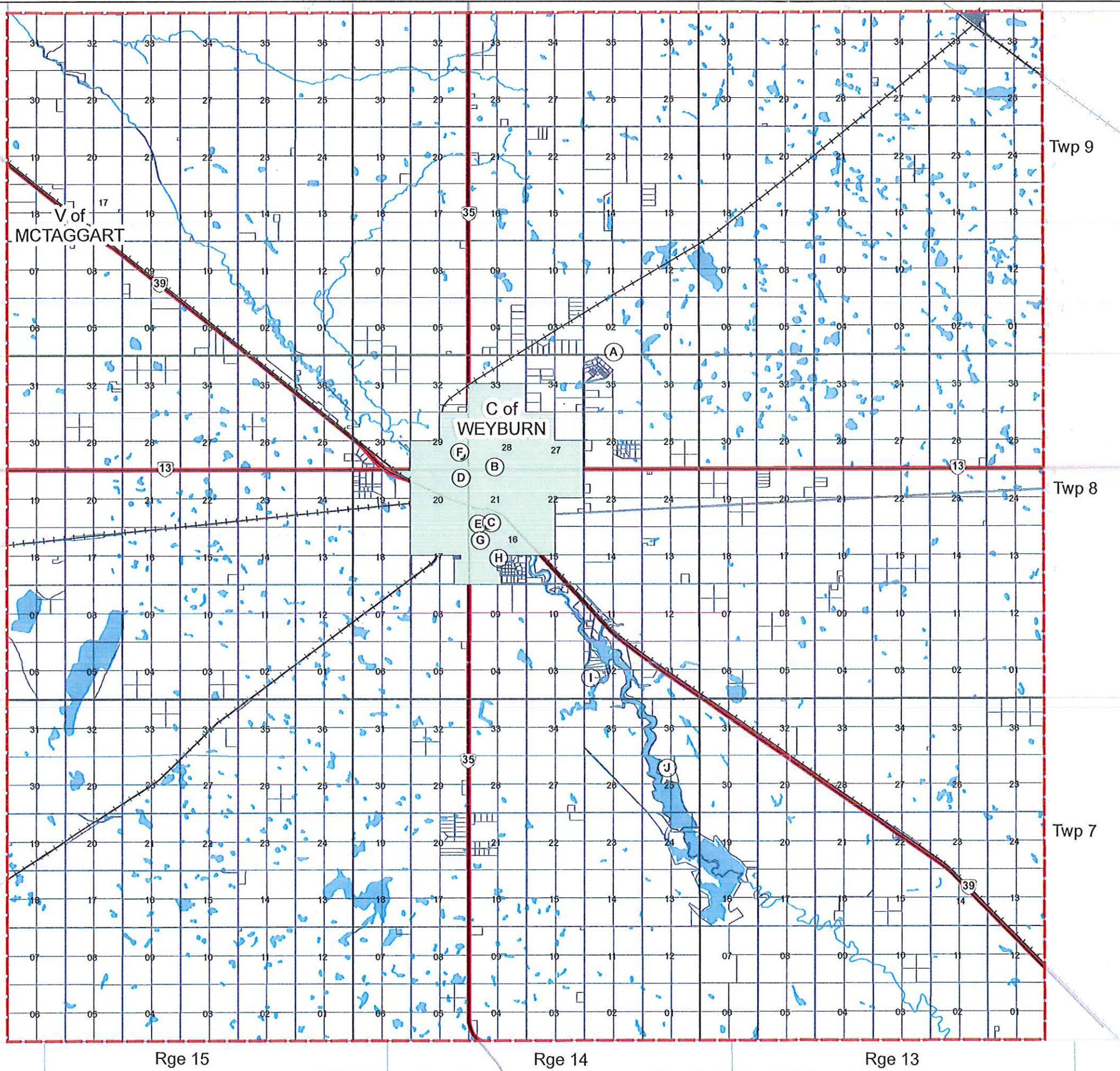
- Country Residential Development
- Highway Commercial
- Mixed Use - Highway Commercial
- Medium-term Commercial Strip
- Medium-term Prestige Commercial
- Long-term Growth Area for Country Residential
- Long-term Prestige Commercial
- Long-term Industrial
- Future Study Area
- Short-term Industrial
- Potential Urban Expansion
- Railways
- Municipal Boundary
- Urban Municipality
- Waterbody-Drainage
- Tatagwa Parkway District
- Environmentally Sensitivity Areas
- Sewage Lagoons
- Sewage Lagoon 457 M. Buffer

NAD 1983 CSRS98 UTM Extended Zone 13N
Canadian Spatial Reference System (CSRS) 98



Rural Municipality of Weyburn No. 67

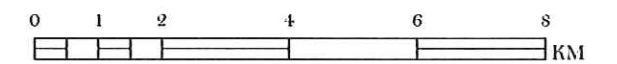
Map 1. Recreational Amenities



- Ⓐ - Weyburn Airport
- Ⓑ - Weyburn Leisure Centre
- Ⓒ - River Park
- Ⓓ - Crescent Point Place/Curling Rink
- Ⓔ - Soo Line Historical Museum
- Ⓕ - Cugnet Centre
- Ⓖ - TC Douglas Centre
- Ⓗ - Weyburn Area Heritage Village
- Ⓘ - Weyburn Golf Club
- ⓵ - Nickle Lake Regional Park

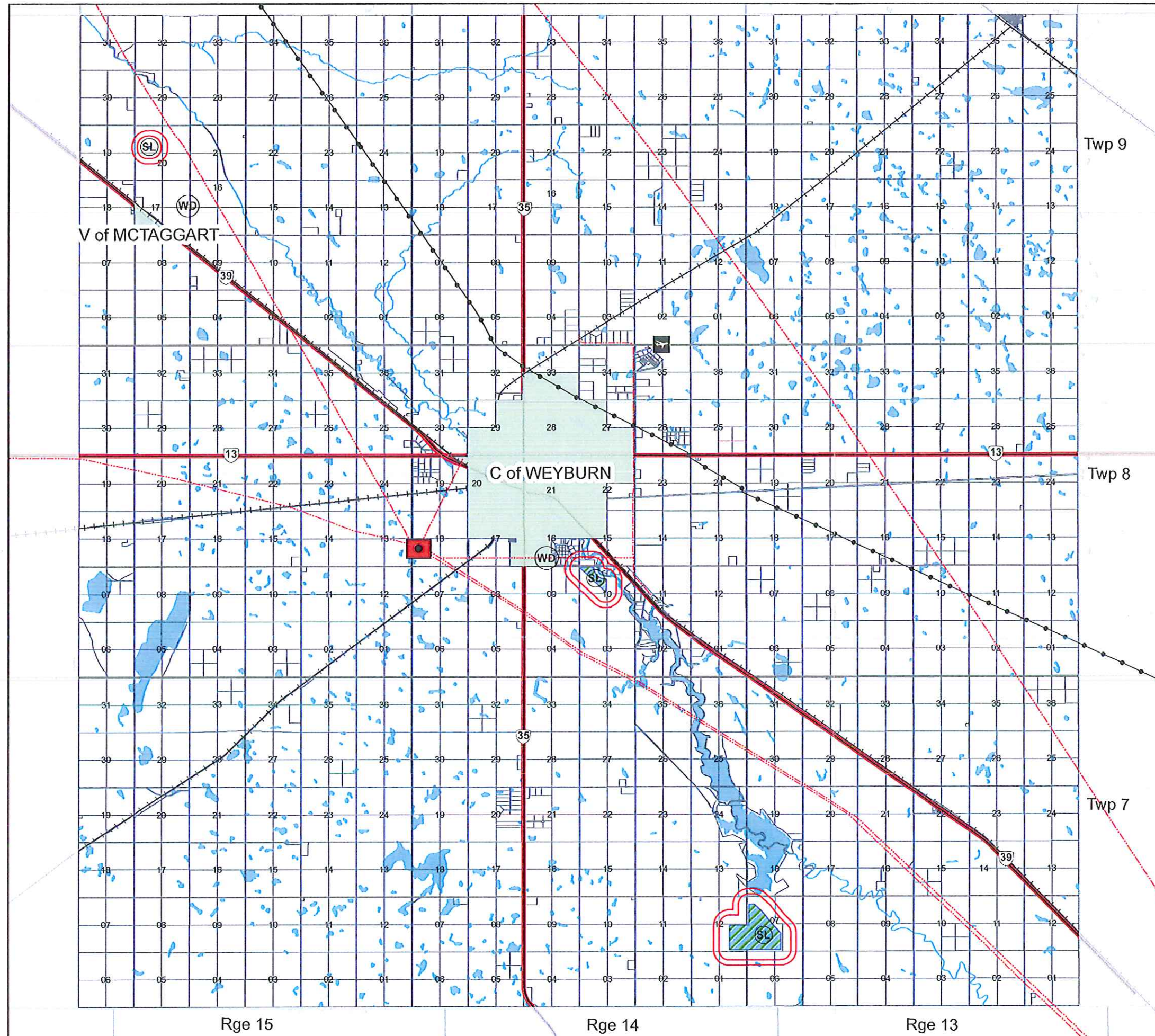
- ++++ Railways
- ⬜ Municipal Boundary
- ⬜ Urban Municipality
- ⬜ Waterbody-Drainage

NAD 1983 CSRS98 UTM Extended Zone 13N
 Canadian Spatial Reference System (CSRS) 98



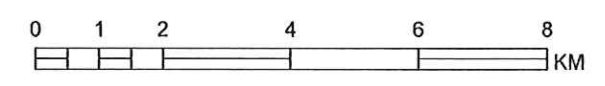
Rural Municipality of Weyburn No. 67

Map 2. Utilities



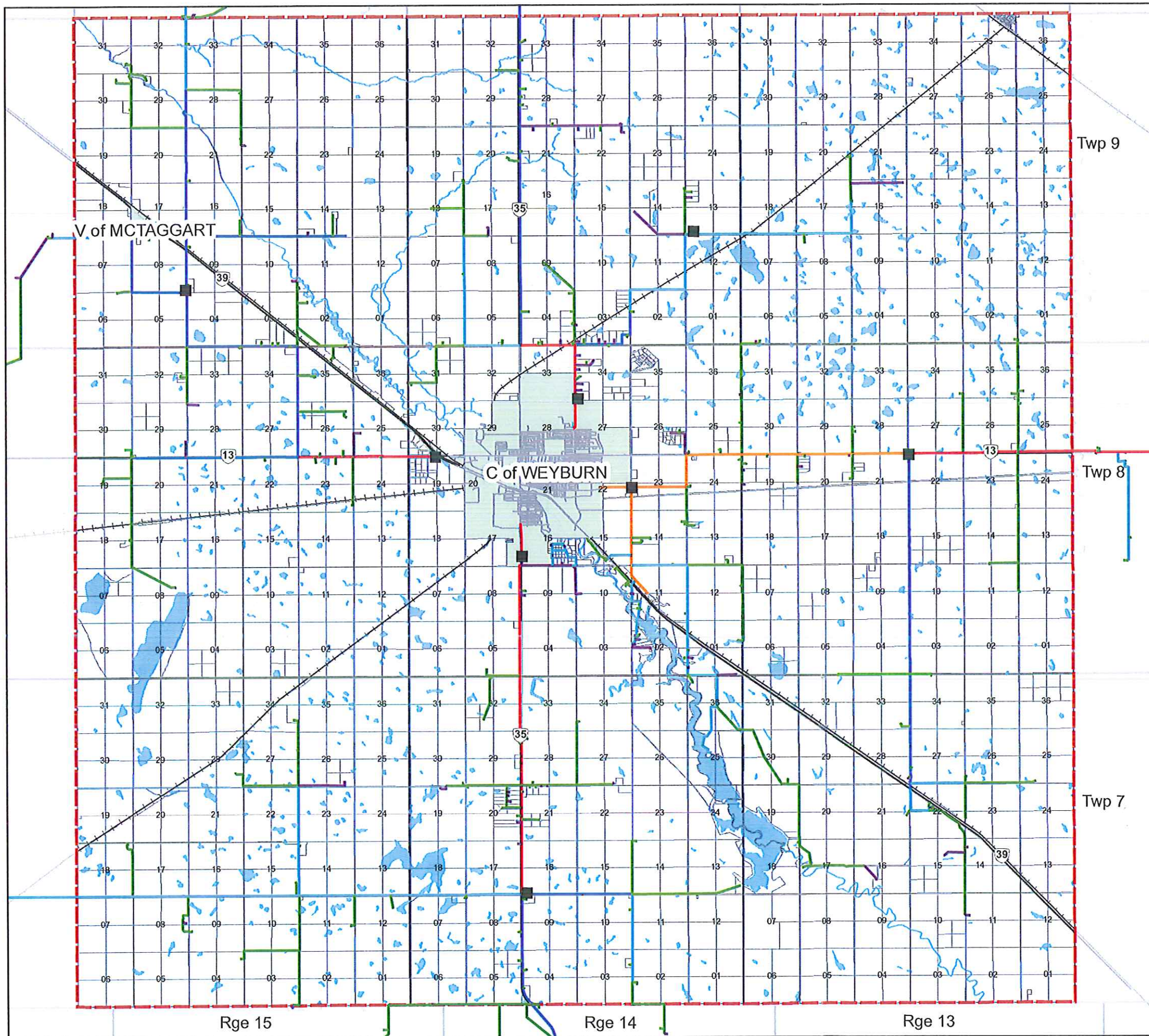
- Airport
- Transformer Station
- Main Power Lines
- Natural Gas Pipeline
- Railways
- Urban Municipality
- Waterbody-Drainage
- Waste Disposal Site (Landfill)
- Sewage Lagoons
- 457m Buffer
- 300m Buffer

NAD 1983 CSRS98 UTM Extended Zone 13N
Canadian Spatial Reference System (CSRS) 98



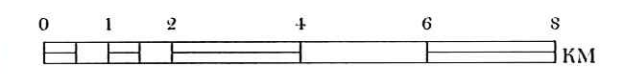
Rural Municipality of Weyburn No. 67

Map 2a. Utilities (Water Lines)



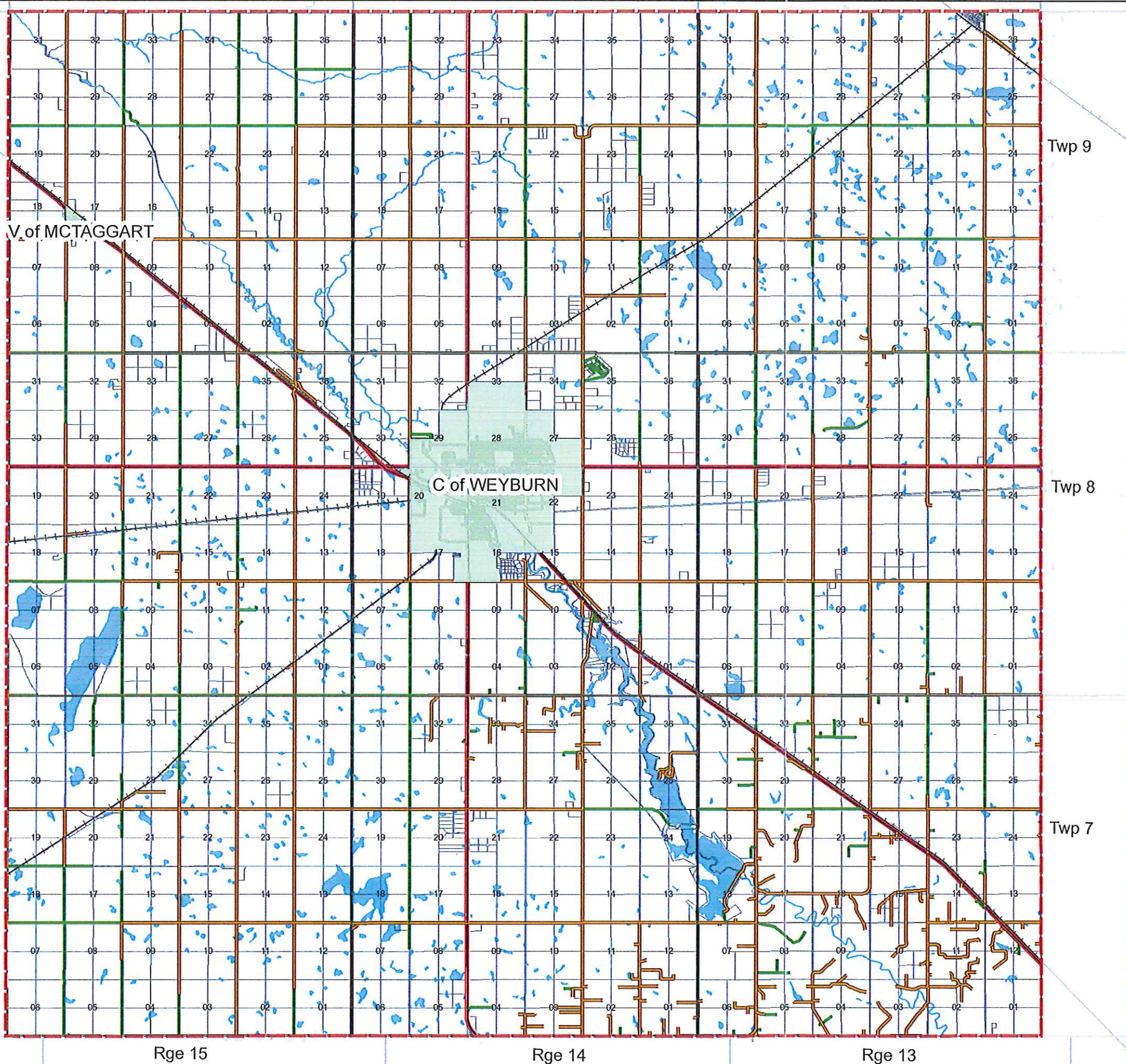
- Pumphouse
- Pipelines Classification**
- M-100
- M-150
- M-38
- M-50
- M-75
- M-08
- ++++ Railways
- ▭ Municipal Boundary
- ▭ Urban Municipality
- ▭ Waterbody-Drainage

NAD 1983 CSRS98 UTM Extended Zone 13N
Canadian Spatial Reference System (CSRS) 98



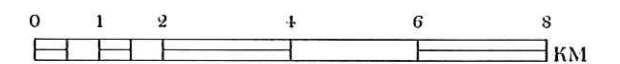
Weyburn Planning District

Map 3. Transportation



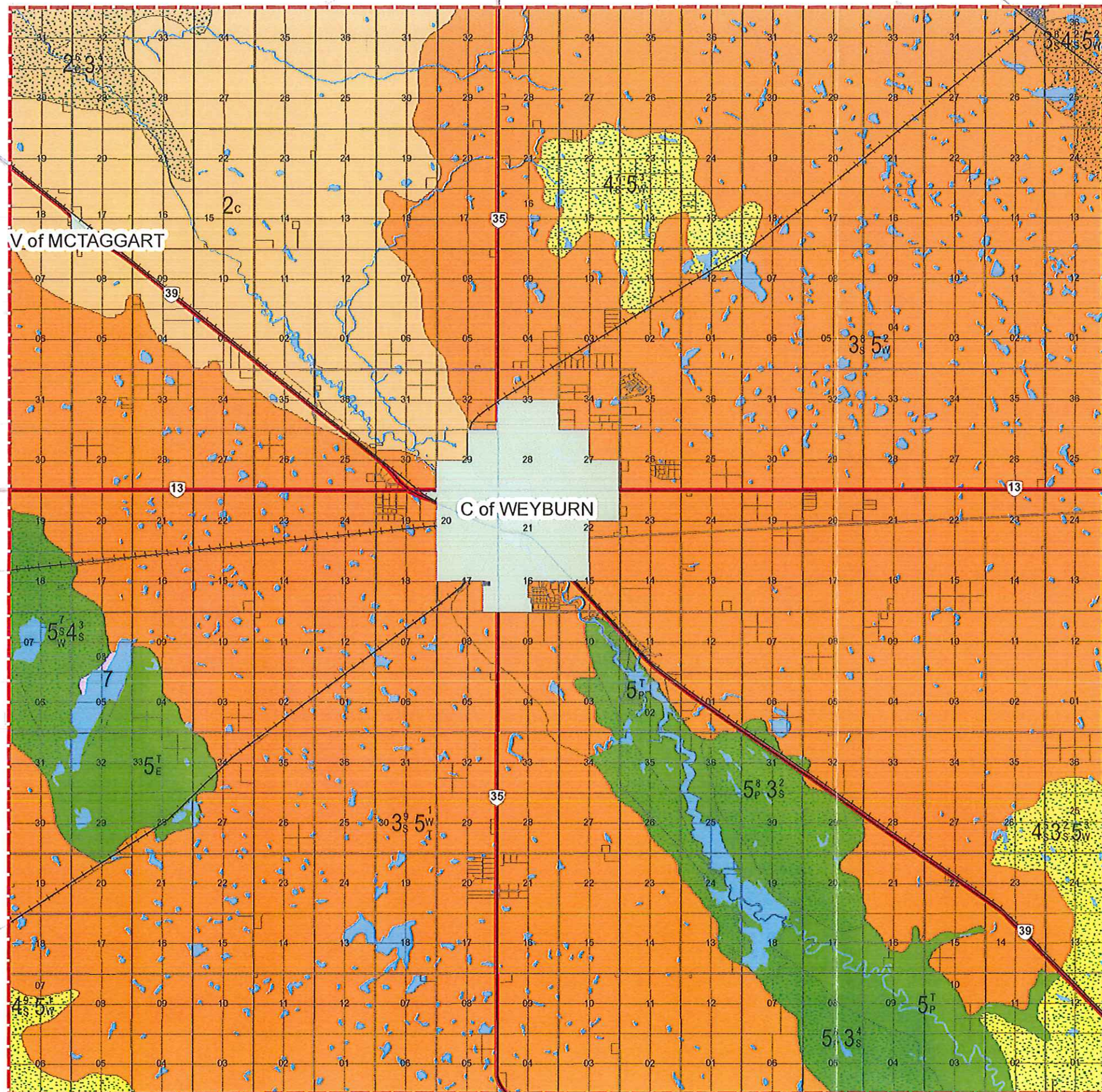
- ++++ Railways
- Provincial Highway
- Primary Collector / Grid Road
- Grid / Access Road
- ▭ Municipal Boundary
- ▭ Urban Municipality
- ▭ Waterbody-Drainage

NAD 1983 CSRS98 UTM Extended Zone 13N
Canadian Spatial Reference System (CSRS) 98



Rural Municipality of Weyburn No. 67

Map 4. Agricultural Potential



- ++++ Railways
- Municipal Boundary
- Waterbody-Drainage
- Urban Municipality

Soil Capability

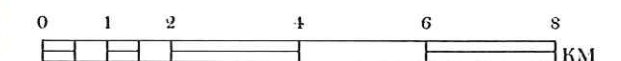
- CLASS 1
- CLASS 2
- CLASS 3
- CLASS 4
- CLASS 5
- CLASS 6
- CLASS 7

- SUBCLASS C: ADVERSE CLIMATE
- SUBCLASS E: EROSION DAMAGE
- SUBCLASS I: INUNDATION
- SUBCLASS P: STONINESS
- SUBCLASS R: SHALLOW SOILS
- SUBCLASS S: SOIL LIMITATIONS
- SUBCLASS T: ADVERSE TOPOGRAPHY
- SUBCLASS W: EXCESS WATER
- SUBCLASS X: MORE THAN ONE LIMITATION

EXAMPLE

$5^8_P 3^2_S$ Area with Class 5 with stoniness limitations, and Class 3 with soil limitations, in the proportion of 8:2.

NAD 1983 CSRS98 UTM Extended Zone 13N
Canadian Spatial Reference System (CSRS) 98



Rge 15

Rge 14

Rge 13

Twp 9

Twp 8

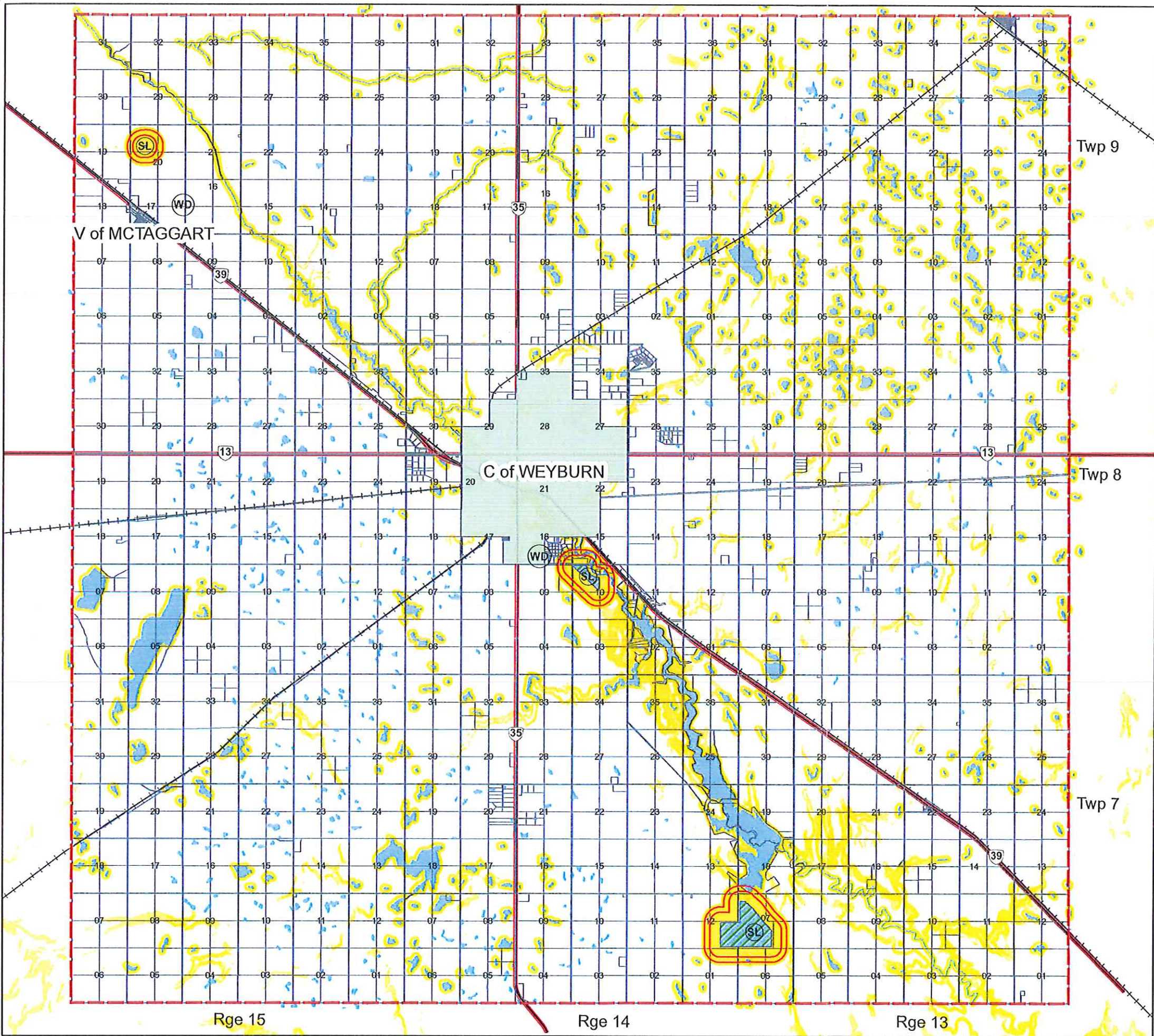
Twp 7

V. of MCTAGGART

C. of WEYBURN

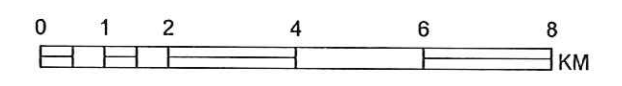
Rural Municipality of Weyburn No. 67

Map 5. Environmentally Sensitive Areas



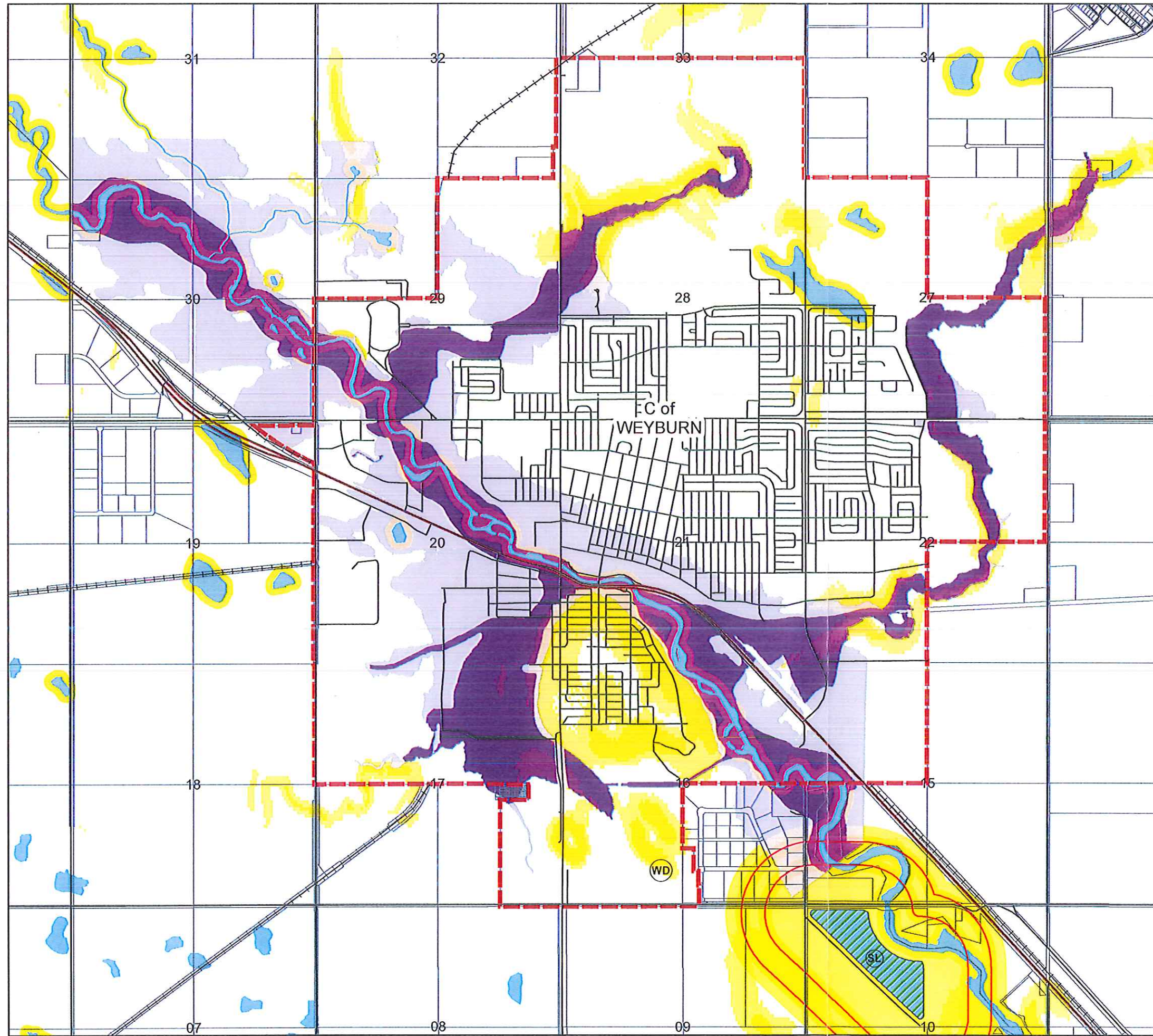
- ++++ Railways
- Municipal Boundary
- Urban Municipality
- Waterbody-Drainage
- Environmentally Sensitive Areas
- Waste Disposal Site (Landfill) (WD)
- Sewage Lagoons (SL)
- 457m Buffer
- 300m Buffer

NAD 1983 CSRS98 UTM Extended Zone 13N
Canadian Spatial Reference System (CSRS) 98



Rural Municipality of Weyburn No. 67

Map 5a. Environmentally Sensitive Areas

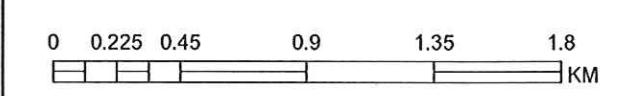


- ++++ Railways
- Municipal Boundary
- Waterbody-Drainage
- Designated Floodway
- Designated Floodway Fringe
- Environmentally Sensitive Areas
- Waste Disposal Site (Landfill) (WD)
- Sewage Lagoons (SL)
- 457m Buffer
- 300m Buffer

NAD 1983 CSRS98 UTM Extended Zone 13N
Canadian Spatial Reference System (CSRS) 98

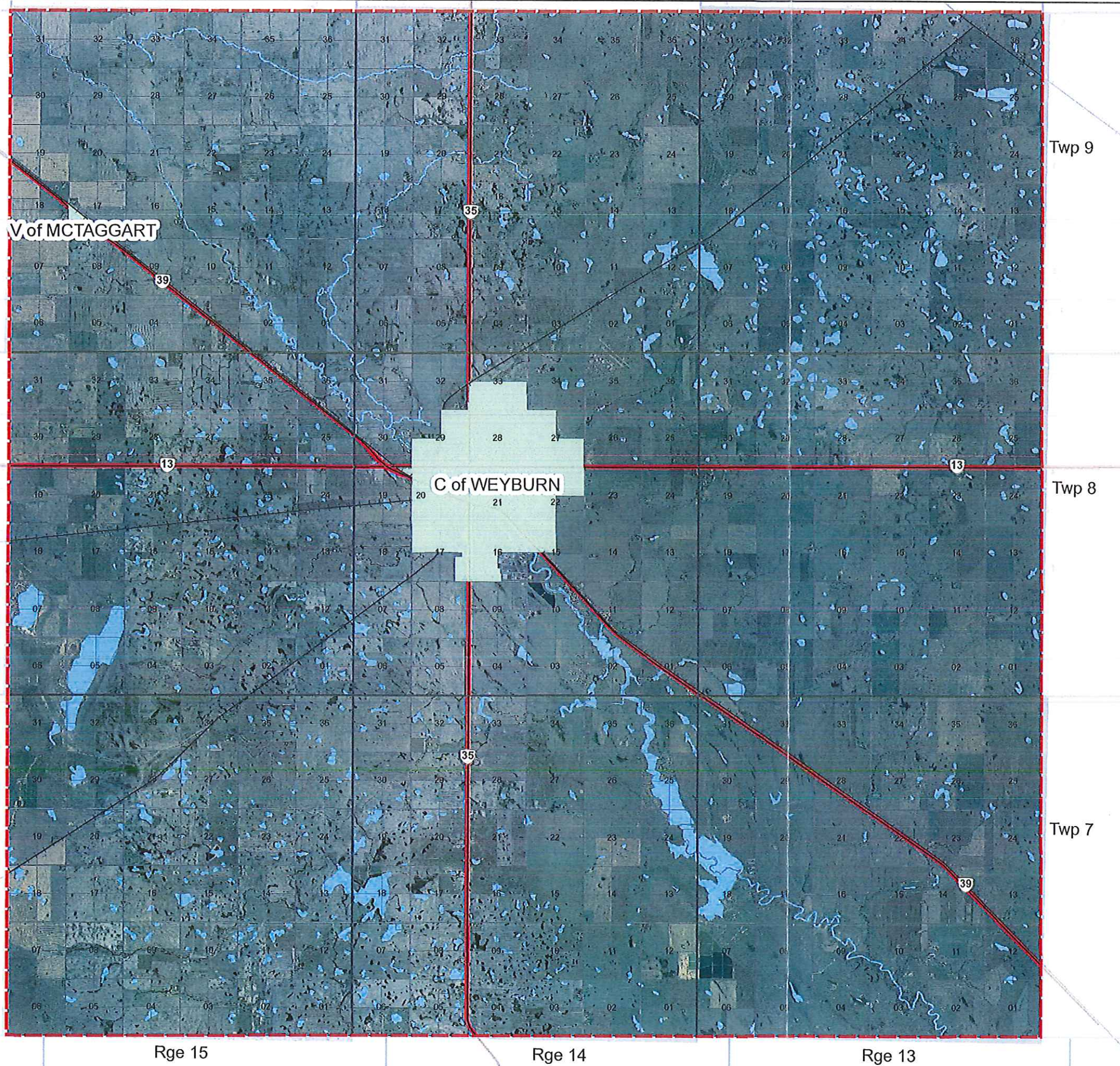
Flood Hazard Map
Land Protection Branch
Ministry of Environment

Flood hazard areas are shown as identified in hydrologic and hydraulic analyses conducted in 1977-79.



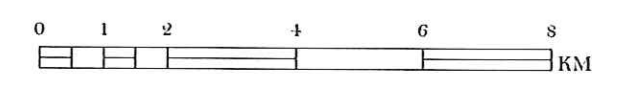
Rural Municipality of Weyburn No. 67

Map 6. Air Photo Mosaic



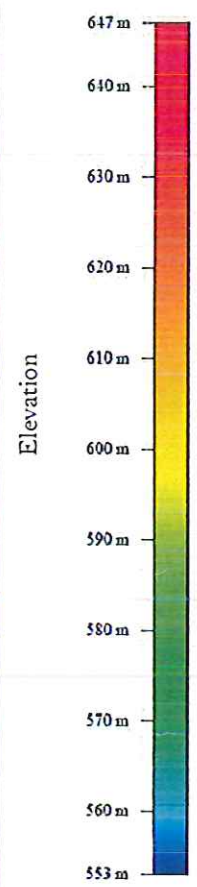
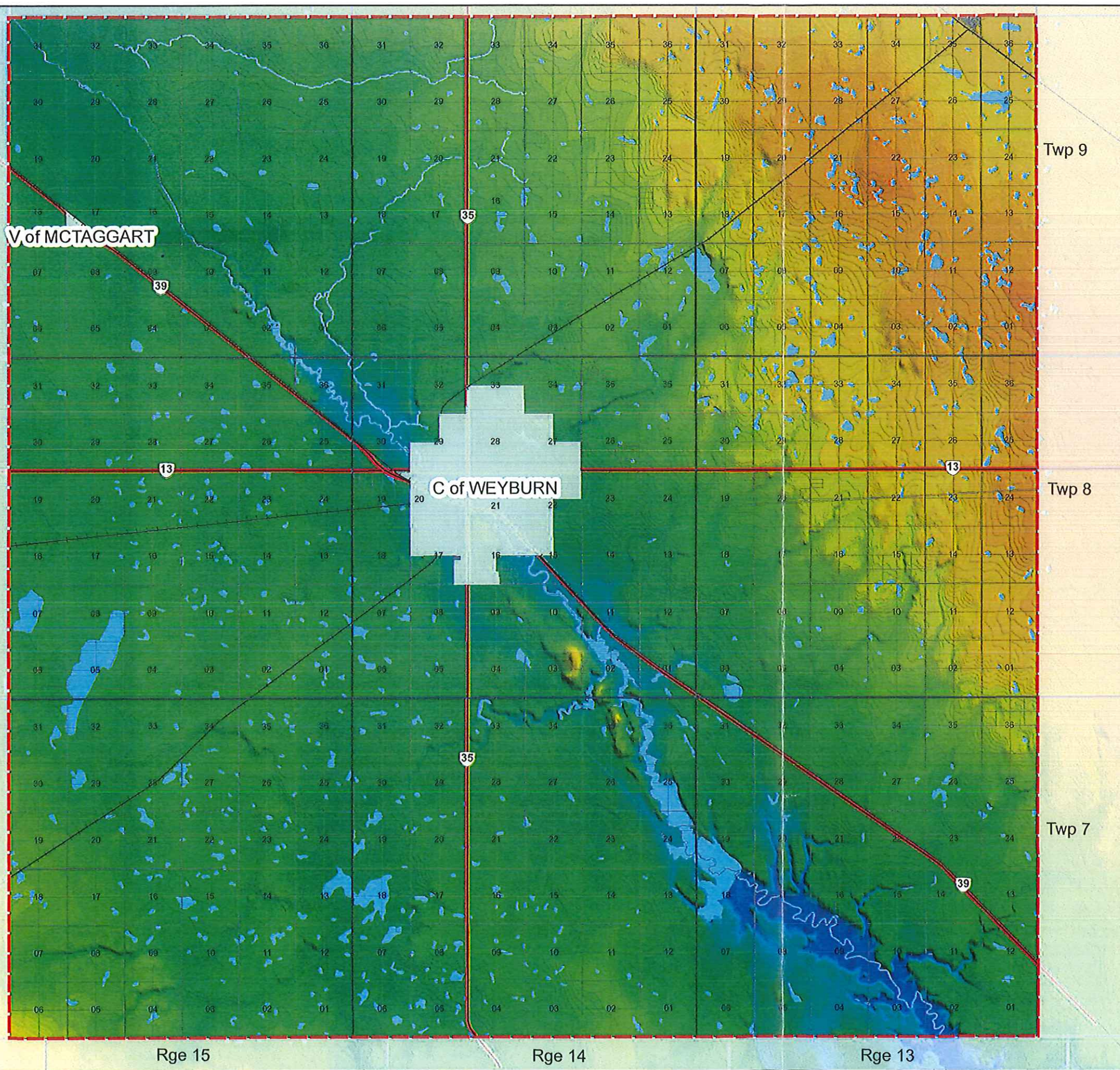
- ++++ Railways
- Municipal Boundary
- Urban Municipality
- Waterbody-Drainage

NAD 1983 CSRS98 UTM Extended Zone 13N
Canadian Spatial Reference System (CSRS) 98



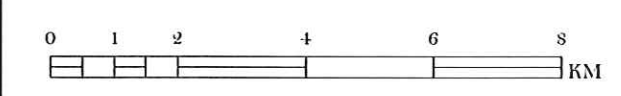
Rural Municipality of Weyburn No. 67

Map 7. Shaded Relief Drainage



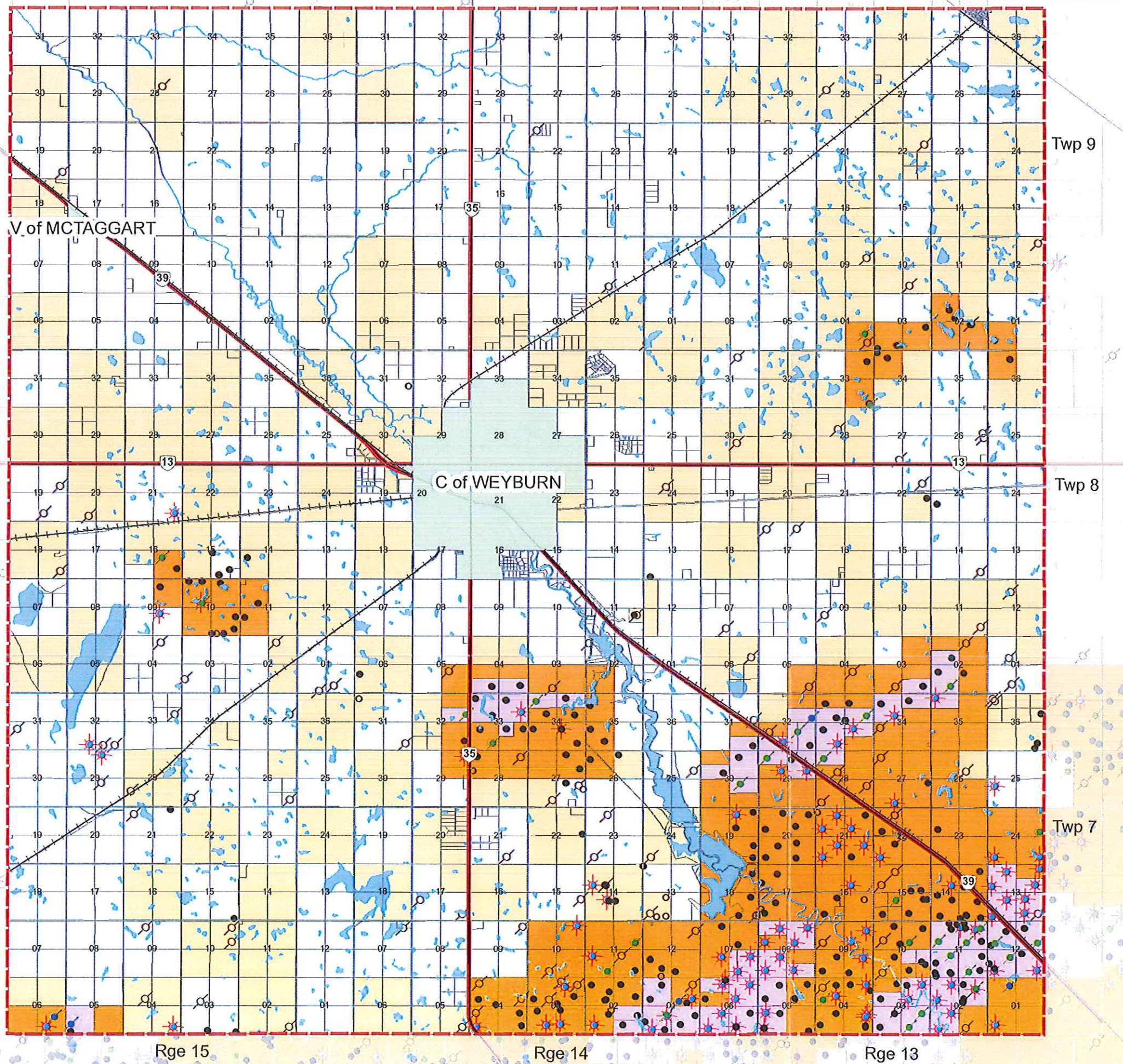
- ++++ Railways
- ▭ Municipal Boundary
- ▭ Urban Municipality
- ▭ Waterbody-Drainage

NAD 1983 CSRS98 UTM Extended Zone 13N
Canadian Spatial Reference System (CSRS) 98



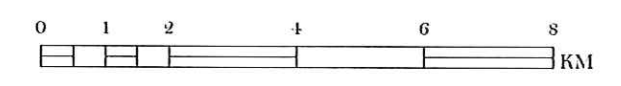
Rural Municipality of Weyburn No. 67

Map 8. Resources Resource Extraction



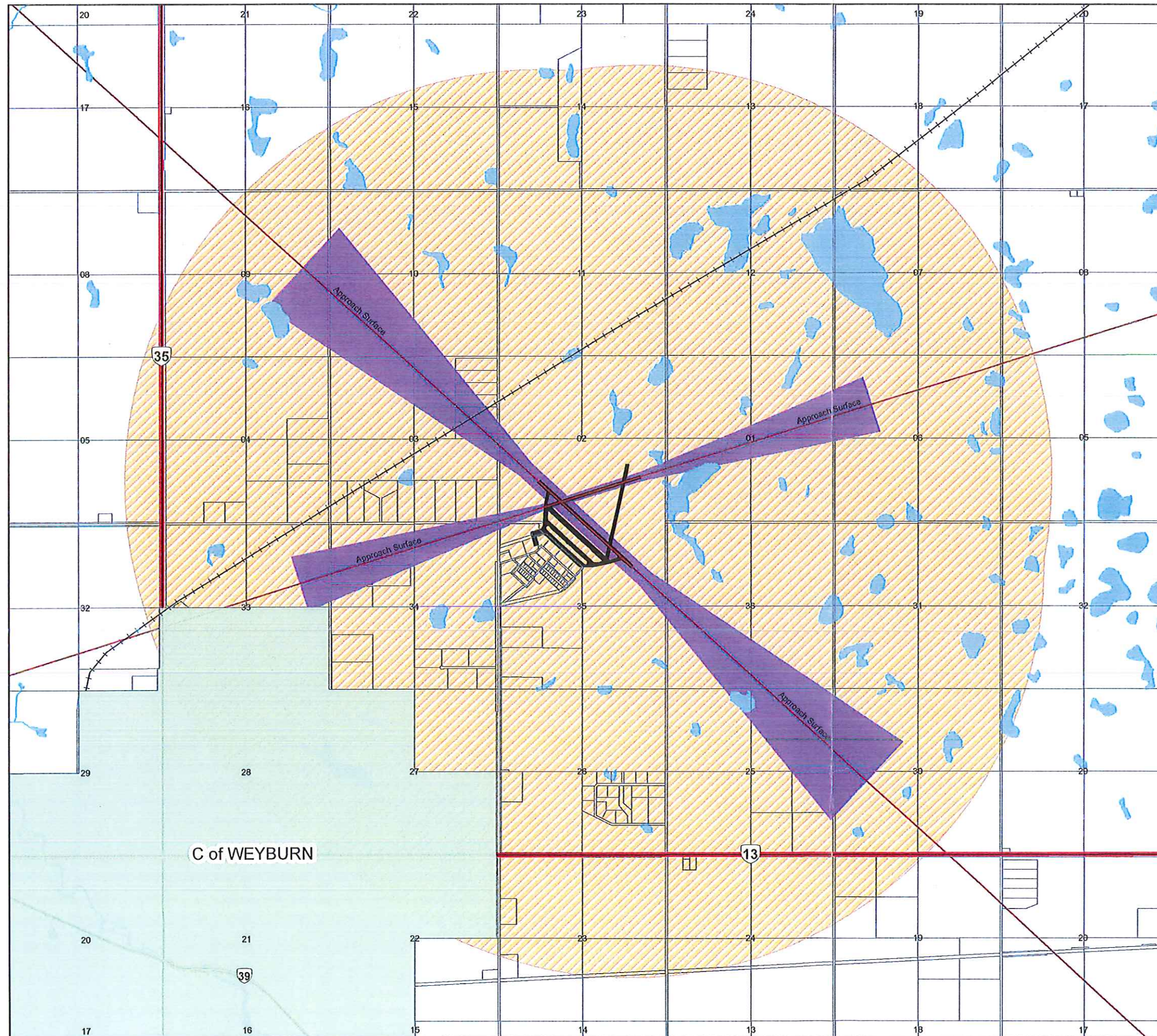
- Licensed Well
- Drilling Well
- ⊕ Cased Well
- Oil Well
- ⊕ Water Injector Well
- ⊕ Water Source Well
- Miscellaneous Well
- ⊕ Abandoned Other Well
- ⊕ Abandoned Dry Well
- ++++ Railways
- Active Oil and Gas Unit Boundaries
- Oil Pools
- Oil and Gas Dispositions
- Municipal Boundary
- Waterbody-Drainage
- Urban Municipality

NAD 1983 CSRS98 UTM Extended Zone 13N
Canadian Spatial Reference System (CSRS) 98



Rural Municipality of Weyburn No. 67

Map 9. Flight Manoeuvring and Approach Area



-  Airport
-  Flight Path Overlay
-  4000 M. Flight Manoeuvring Area
-  Railways
-  Municipal Boundary
-  Waterbody-Drainage
-  Urban Municipality

NAD 1983 CSRS98 UTM Extended Zone 13N
Canadian Spatial Reference System (CSRS) 98

