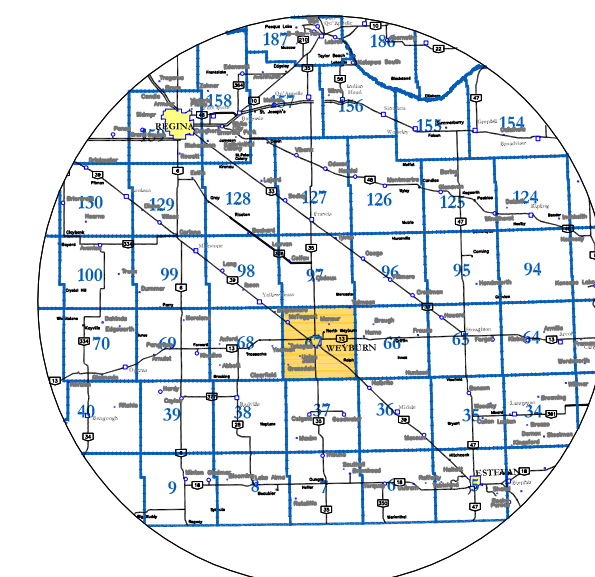


R.M. of Weyburn No. 67

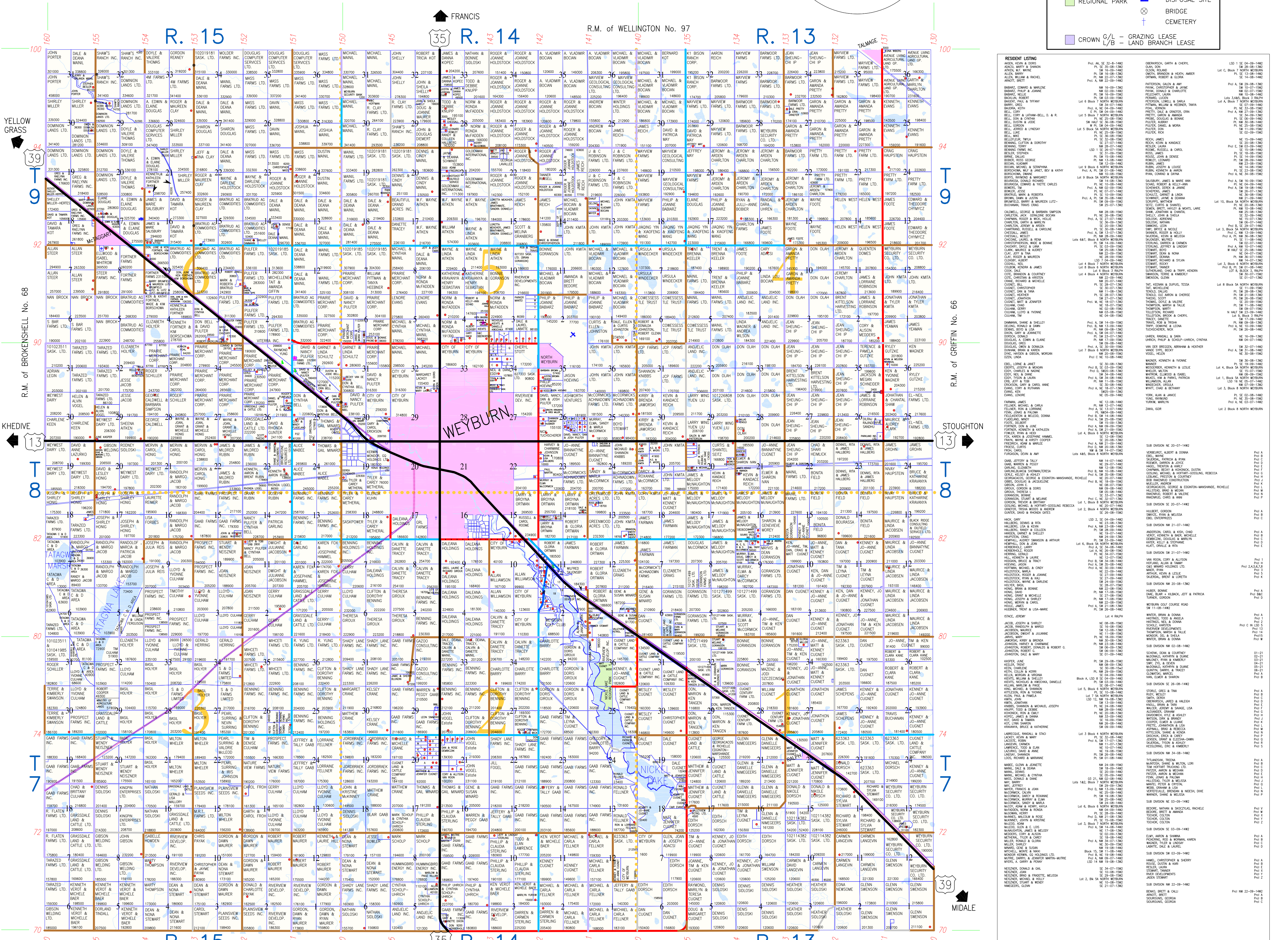
West of the 2nd Meridian
23-6th Street N.E. Weyburn, Sask. S4H 1A7
Phone: 306-842-2314 Fax: 306-842-1002
Email: rm.67@sasktel.net

PIPELINES AND GAS LINES MAY NOT BE AS THEY APPEAR ON MAP. PLEASE CALL BEFORE YOU DIG.



LEGEND

- PROVINCIAL HIGHWAY
- PRIMARY GRID
- SURFACED
- MAIN FARM ACCESS
- GRAD ROAD
- GRADED MUNICIPAL ROAD
- MUNICIPAL ROAD
- UNGRADED DIRT TRAIL
- MUNICIPAL ROAD ALLOWANCE
- ABANDONED RAILWAY
- PIPELINES
- TOWN
- WATER/SLOUGH
- REGIONAL PARK
- DISPOSAL SITE
- BRIDGE
- CEMETERY
- YARD SITE
- DIVISION LINES
- GRAZING LEASE
- LAND BRANCH LEASE



RESTING LISTING

Parcel No.	Owner Name	Parcel No.	Owner Name
100-100-100-100	JOHN PORTER	100-100-100-100	JOHN PORTER
100-100-100-100	DALE & DEANA MANIL	100-100-100-100	DALE & DEANA MANIL
100-100-100-100	SHAW'S BROS INC.	100-100-100-100	SHAW'S BROS INC.
100-100-100-100	SHAW'S BROS INC.	100-100-100-100	SHAW'S BROS INC.
100-100-100-100	SHAW'S BROS INC.	100-100-100-100	SHAW'S BROS INC.
100-100-100-100	SHAW'S BROS INC.	100-100-100-100	SHAW'S BROS INC.
100-100-100-100	SHAW'S BROS INC.	100-100-100-100	SHAW'S BROS INC.
100-100-100-100	SHAW'S BROS INC.	100-100-100-100	SHAW'S BROS INC.
100-100-100-100	SHAW'S BROS INC.	100-100-100-100	SHAW'S BROS INC.
100-100-100-100	SHAW'S BROS INC.	100-100-100-100	SHAW'S BROS INC.

MAP DRAFTED: JAN. 1, 2013
MAP REVISED: OCT. 1, 2022